

REVISION:  
 -Took down the entire chimney or Chase to open up. The family room will become theater room with surround sound system. Also with little wet bar with pantry with 24 inch sink and a 24 inch fridge.  
 -Remove closet on the bath 106  
 -Adjust the wall between 103 and 104 door to 2ft long

SPEAKER

REV	REVISION	DATE

revisions

project

450 TERRACE DRIVE  
 Snowmass Village, CO 81615

client

content  
 MAIN FLOOR PLAN

drawn by; GIL  
 checked by;  
 date; JAN 15, 2018  
 drawing no.

A-101



REVISION:  
took down the entire chimney

REV	REVISION	DATE

revisions

project

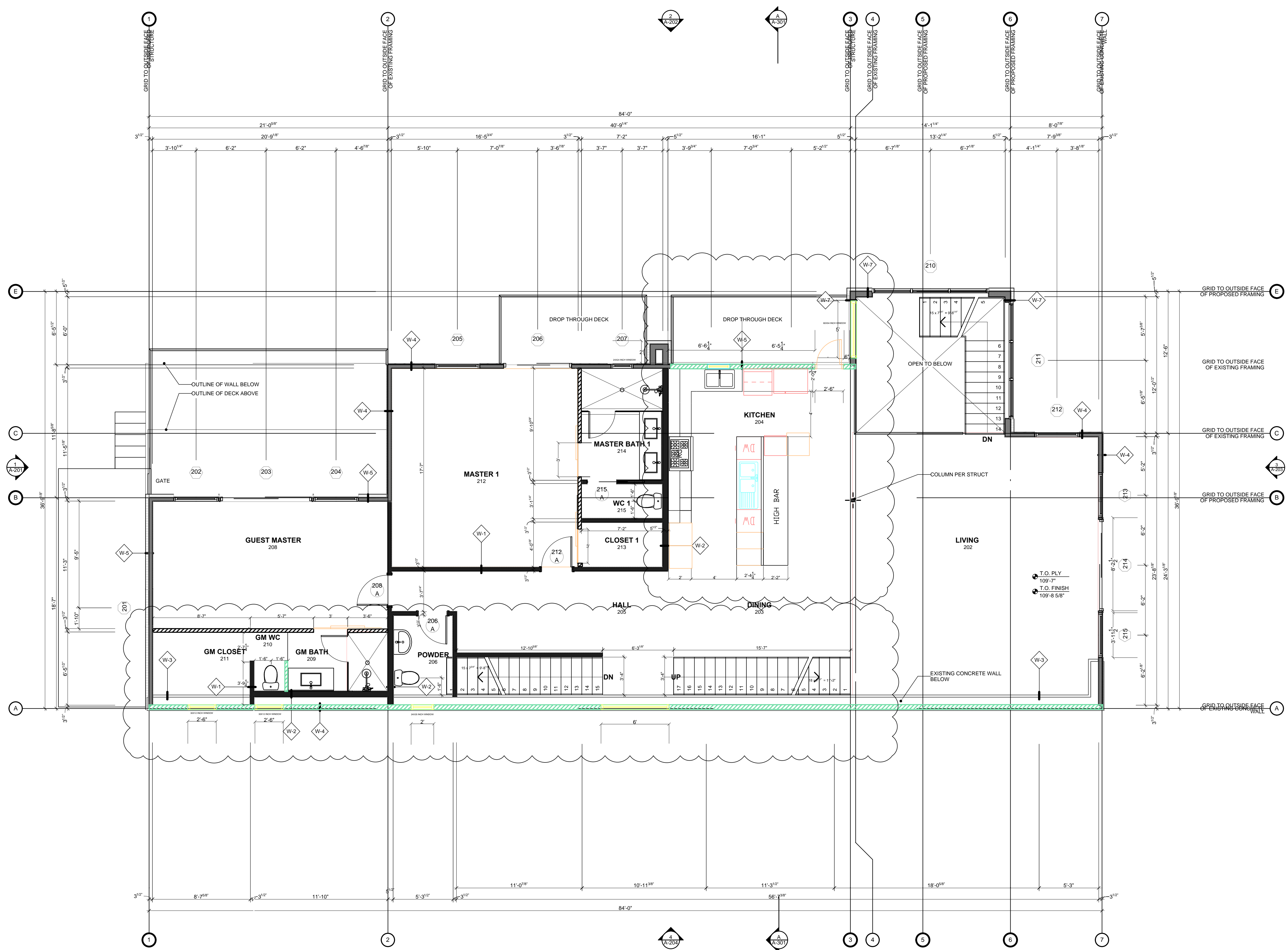
450 TERRACE DRIVE  
Snowmass Village, CO 81615

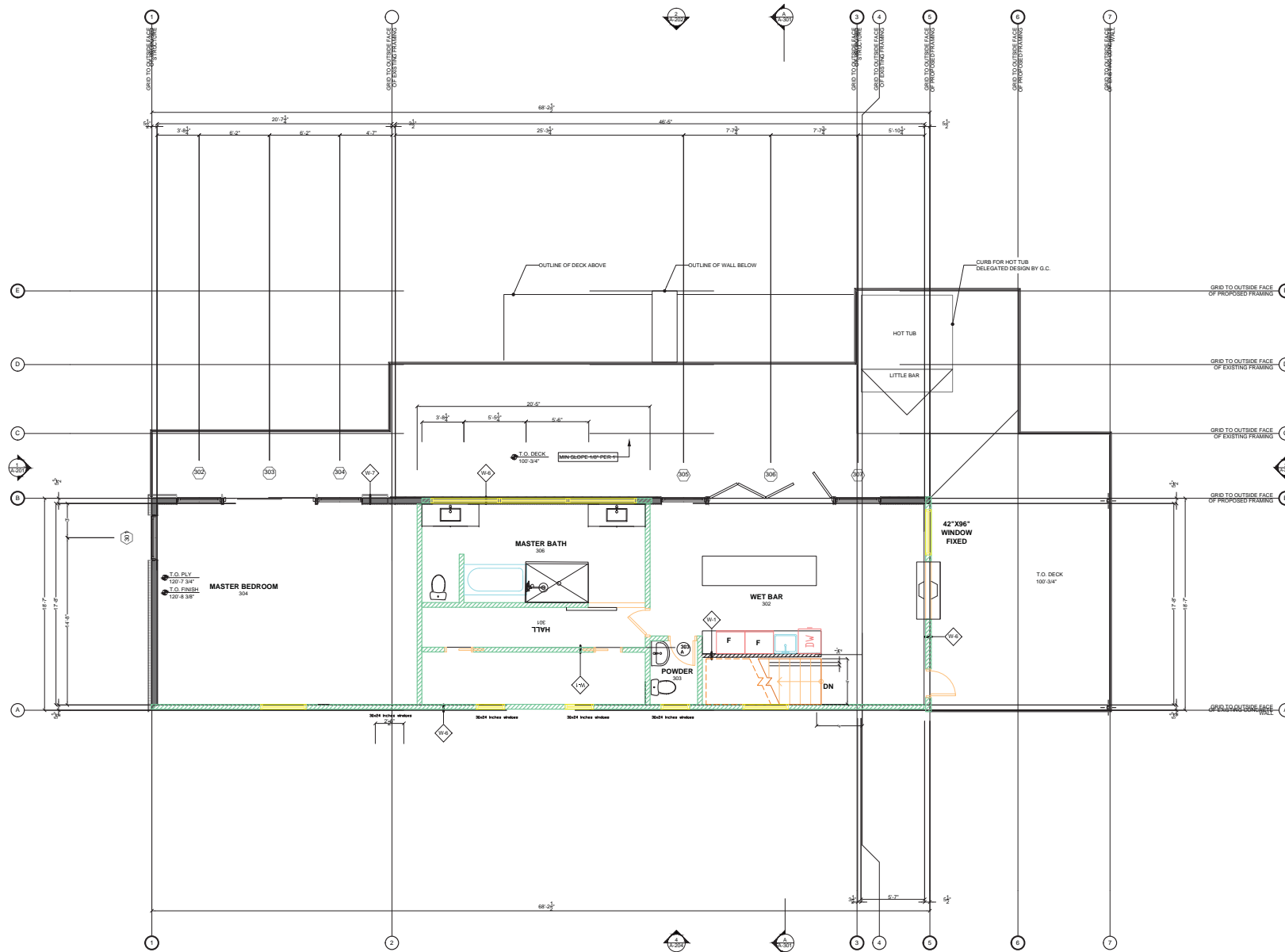
client

content  
SECOND FLOOR PLAN

drawn by; GIL  
checked by;  
date; DEC 22, 2017  
drawing no.

A-102





REV	REVISION	DATE

revisions

project

450 TERRACE DRIVE  
Snowmass Village, CO 81615

client

content  
THIRD LEVEL FLOOR PLAN

drawn by; GIL  
checked by;  
date; DEC 27, 2017  
drawing no.

A-103